

HOLLTECK

ROLLING MILL GUIDES AND EQUIPMENT

Design Information Checklist

Customer: _____

Attention: _____

Enquiry / Order No.: _____

Date: _____

Hollteck Contact: _____

Hollteck Reference No.: _____

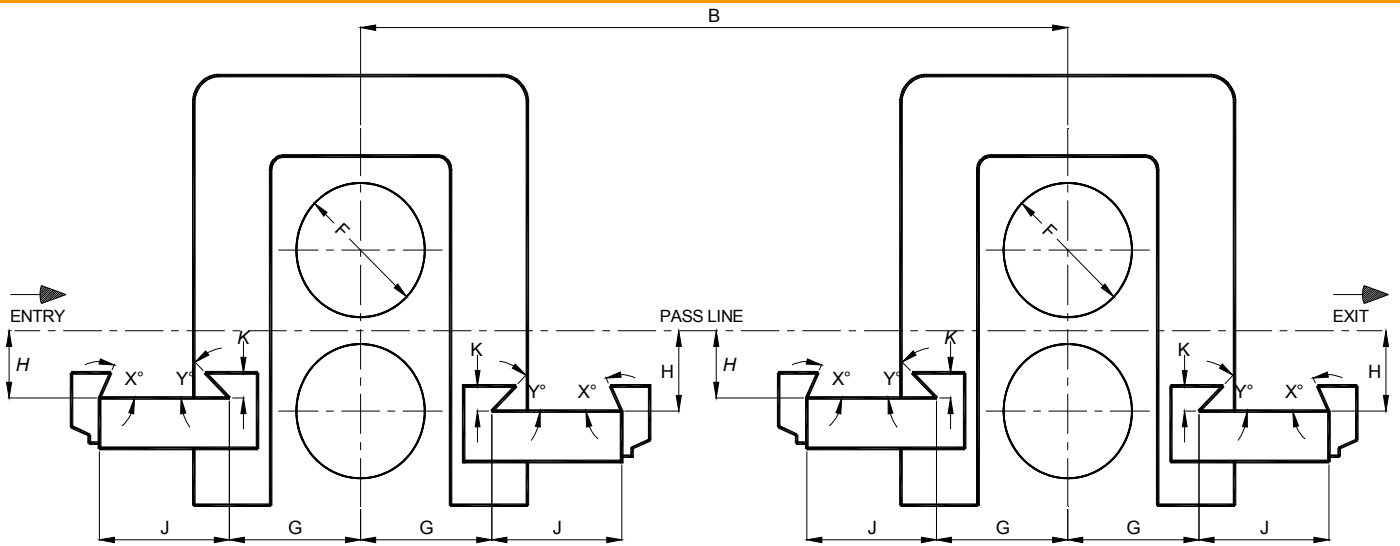
Dear Customer:

In order for us to process your order or enquiry, kindly complete this 'Design Information Checklist' and return to the address below.

Thank you for your cooperation.

The Hollteck Company Ltd.

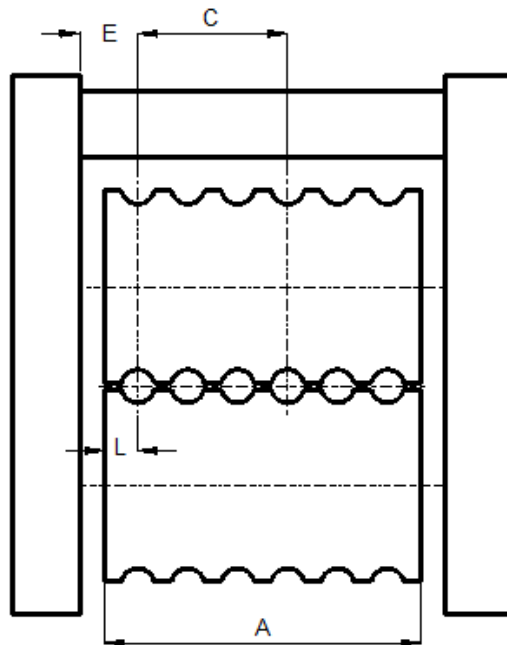
The HOLLTECK Company Ltd.
63 Jenkin Road,
Sheffield, S9 1DS.
South Yorkshire, England
Phone +44 (0) 114 2433466 - Fax +44 (0) 114 2437309
Email: sales@hollteck.co.uk



Does the mill roll show as above when viewed from the mill floor?

Yes

Opposite



NOTE: 'C' DIMENSION IS FOR STRAND CENTRES FOR SLITTING ONLY.

Please supply Hollteck with drawings indicated:

	Your Drawing No.		Your Drawing No.
Plant Layout	Roll Stand Arrangement
Roll Housing Detail	Roll Pass Progression
Entry Rest Bar Detail	Roll Pass Details
Delivery Rest Bar Detail	Other

Mill Housing and Rest Bar Information

Stand Number										
Hor. Or Vert.										
Entry or Exit	Entry	Exit	Entry	Exit	Entry	Exit	Entry	Exit	Entry	Exit
A										
B										
C										
E										
Entry or Exit										
F (max)										
F (min)										
G										
H (max)										
H (min)										
J										
K										
L										
X° (clamp)										
Y°										
Rest Bar Type										



Note: Please show detail or provide drawing if your Rest Bar is different to the above.

General Information

Is Fine Pass Adjustment (F.P.A) required on the Entry Guide bases? Yes No

For Twister Guides ONLY

Direction of twist looking from the furnace in the direction of material flow.

Clockwise

Counter Clockwise

Comments:

.....

.....

